






**Vela**  
everything *flows*



Entrance interpretation	6
Finishes and colors	42
Technical characteristics	44



We are not interested in the mediocre,  
we know beauty,  
we go in search of the sublime

Carlo Scarpa

everything *flows*

# Vela

The door *slides...*  
to change the rules of entrance architectures

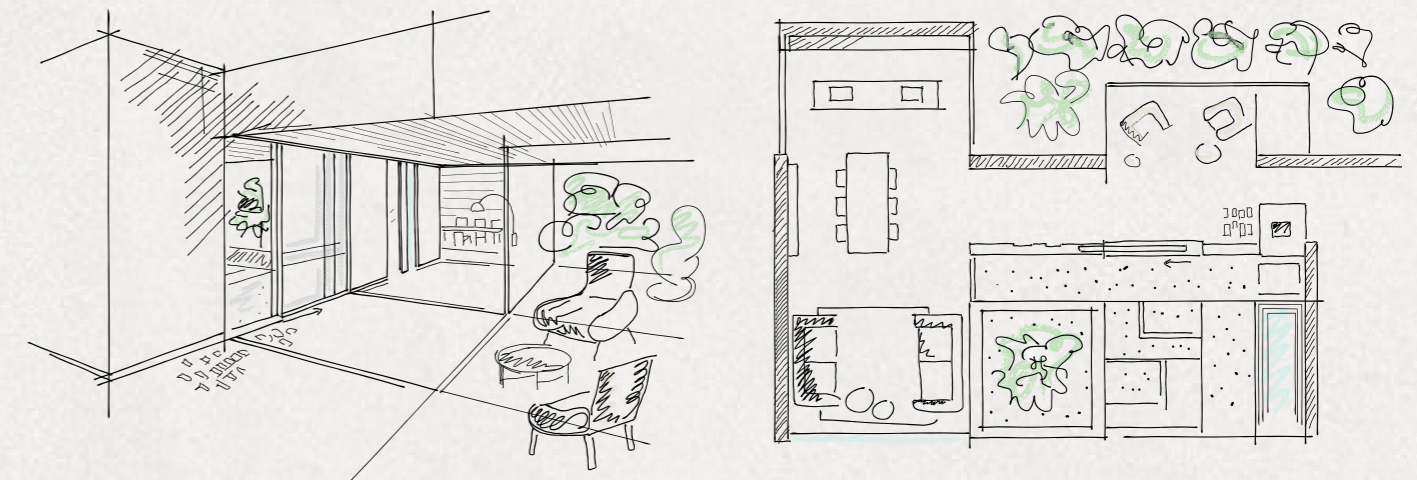
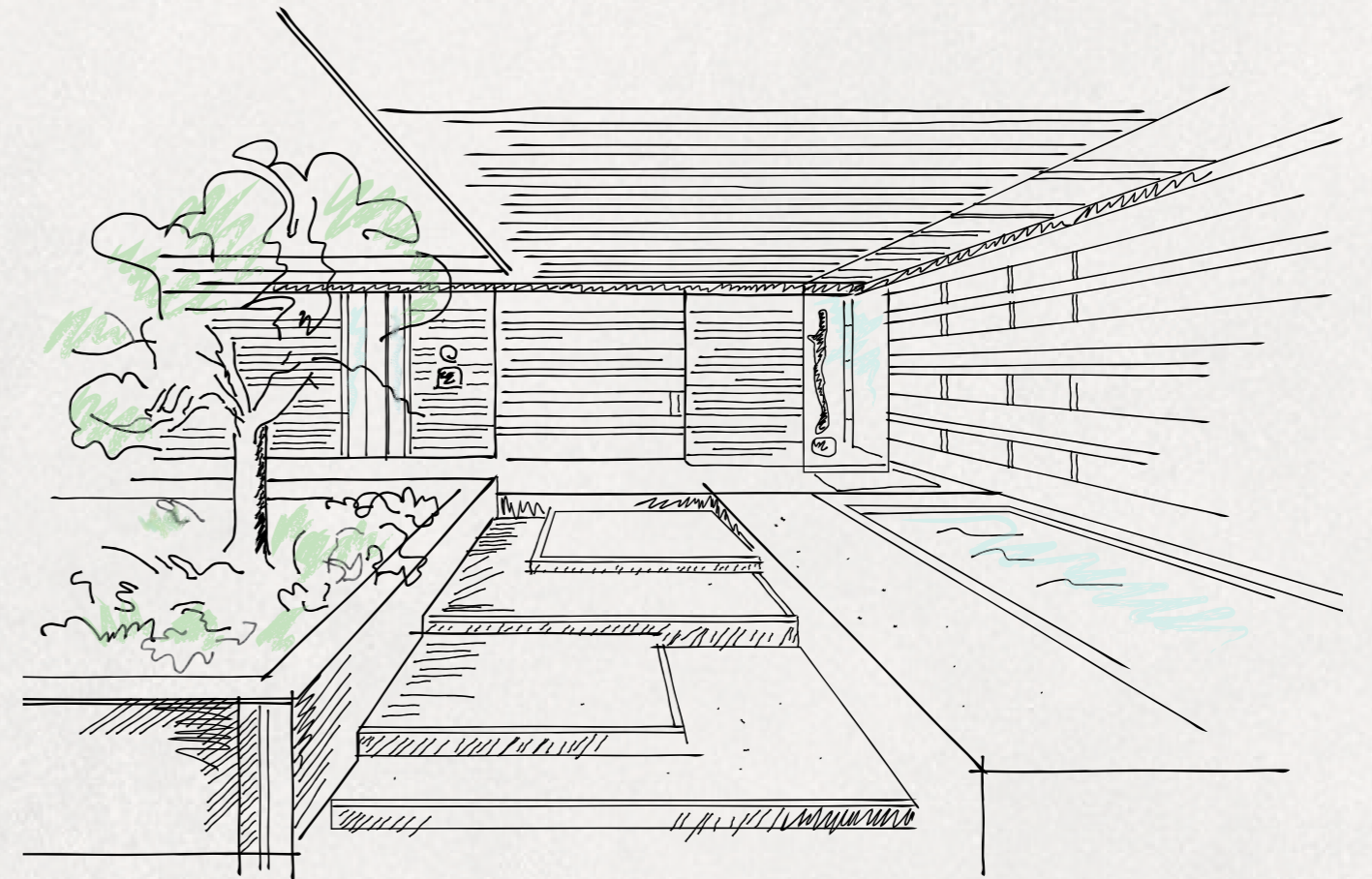
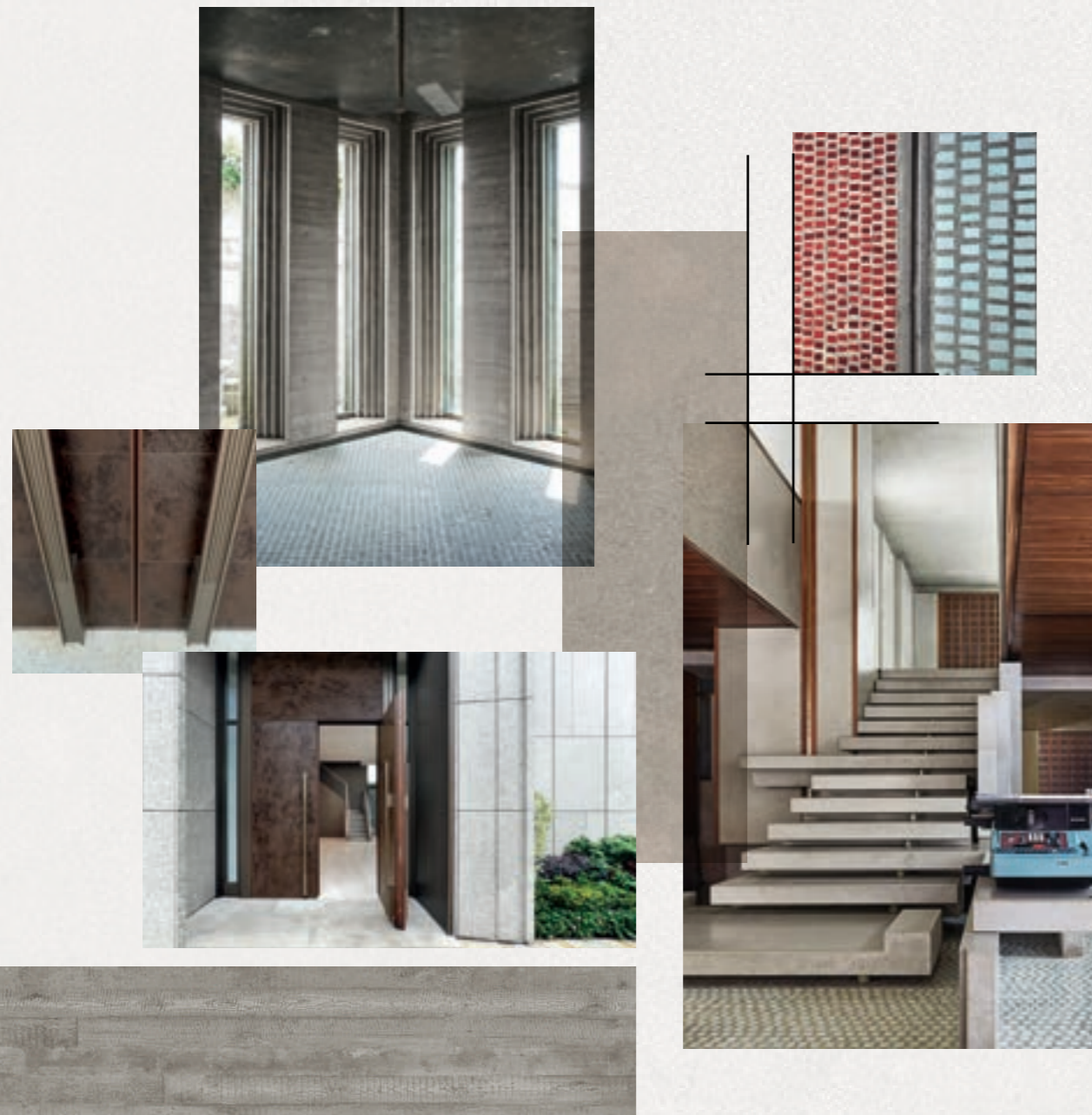
---

As witnesses to an historic transformation that rewrites the rules in every area, Oikos Venezia revolutionizes the concept of **entrance architecture**. The new **Vela sliding safety** door positions itself as a beacon for innovation and futuristic vision. An opening and closing system embodied in an elegant horizontal movement. **For the first time as front door of a house.**



# Entrance interpretation

# In the Spirit of Scarpa







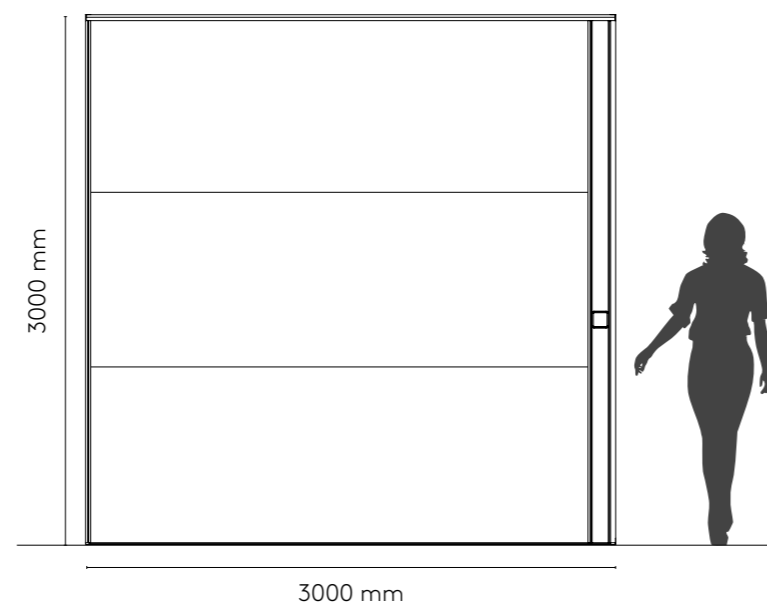
**External**

Line To drawing  
Finish Formwork Concrete 2



**Internal**

Line To drawing  
Finish Smooth Concrete 2





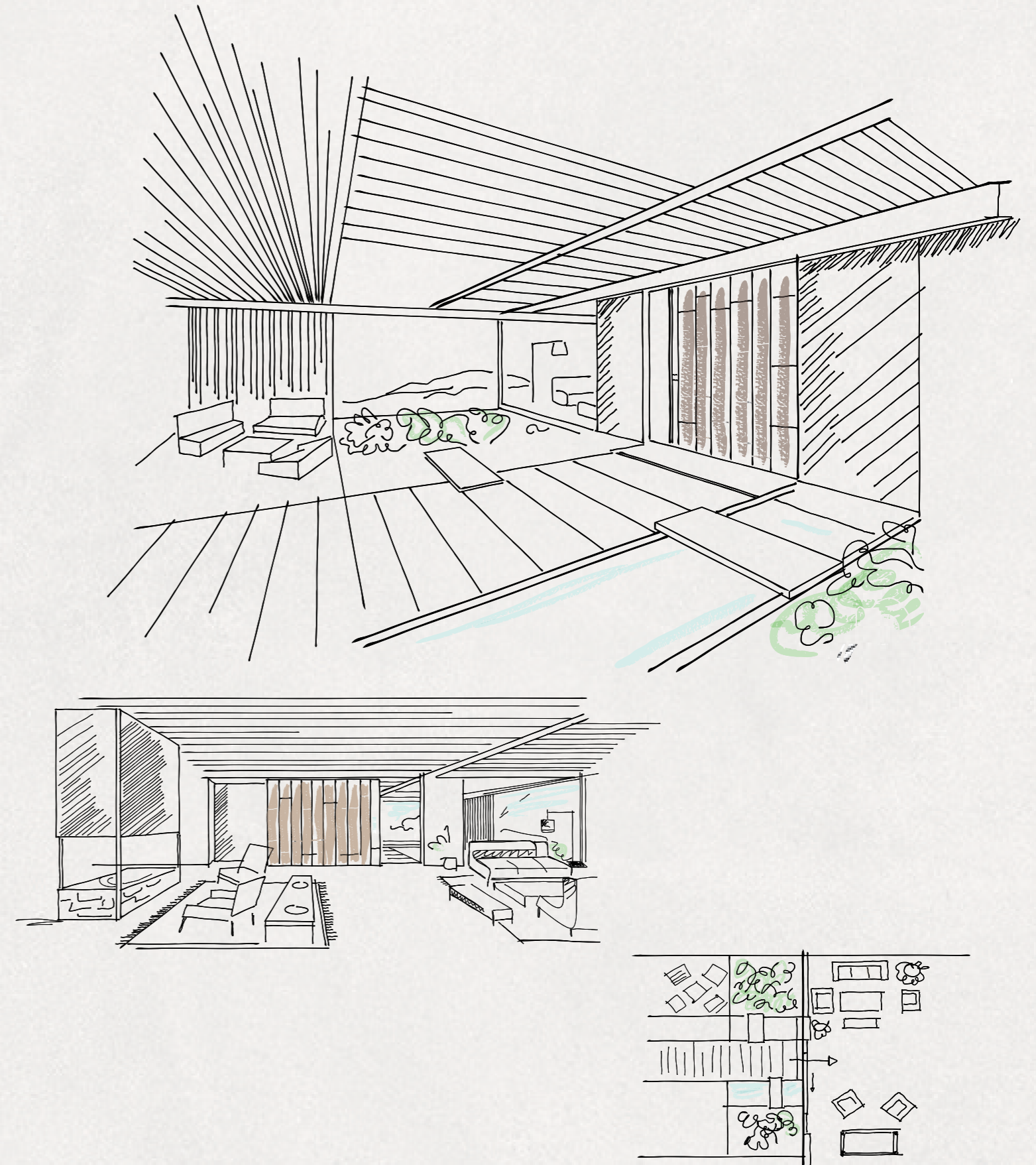






# Entrance interpretation

# Green Soul







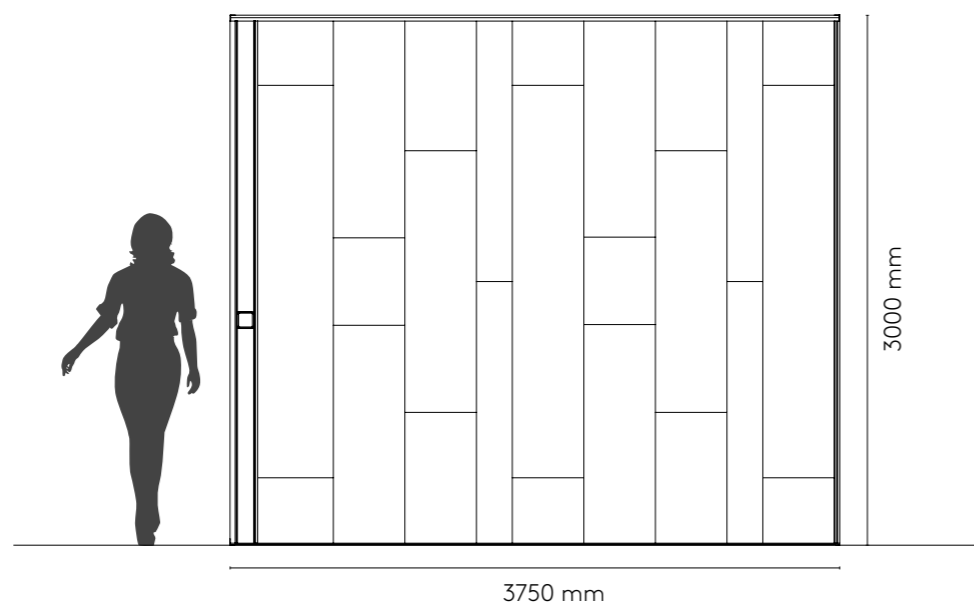
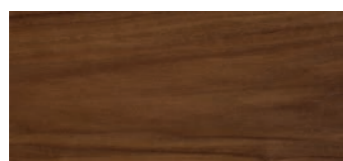
**External**

Line Vertical Tavolato  
Finish Iron



**Internal**

Line Vertical Tavolato  
Finish Canaletto Walnut





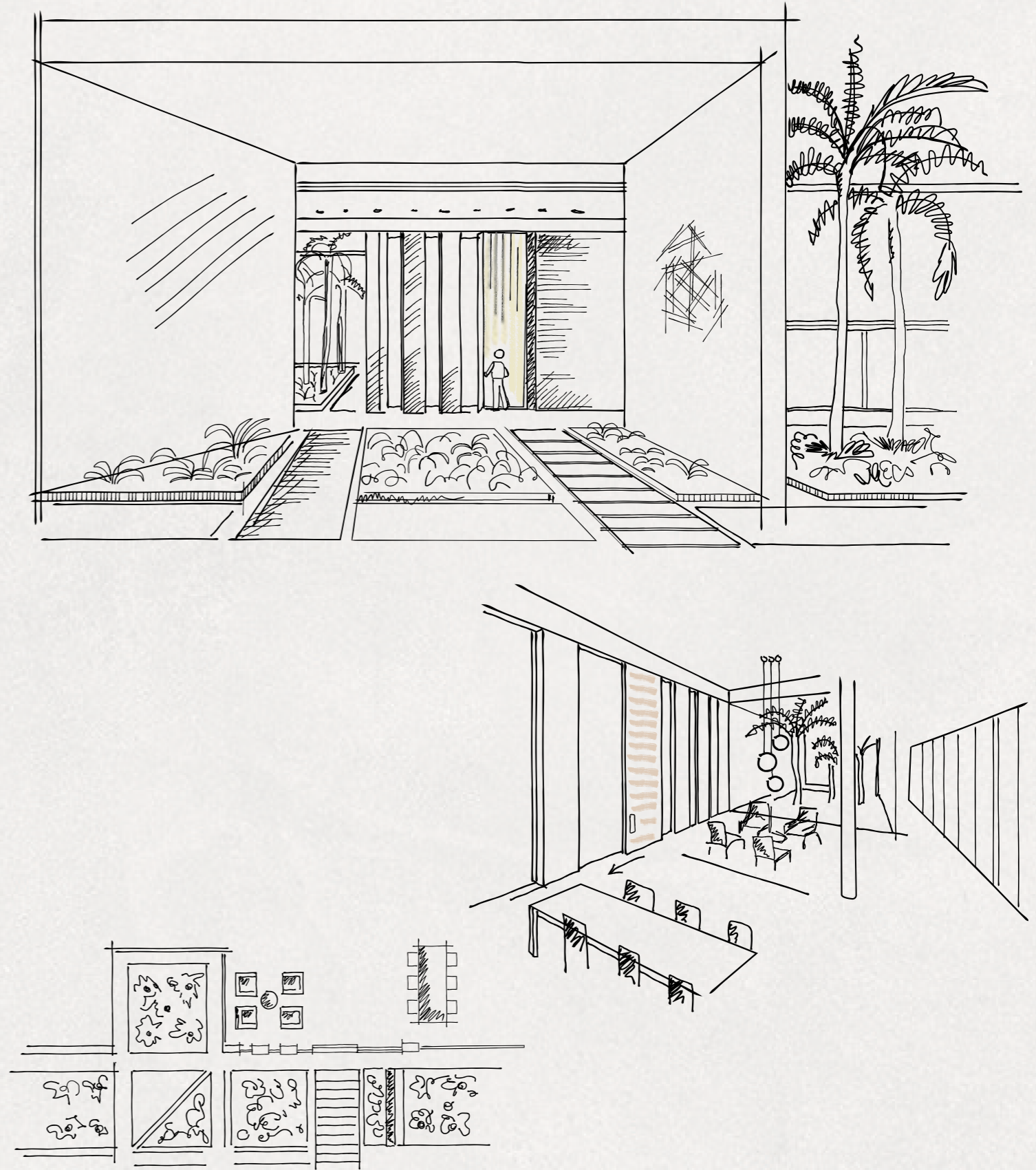






# Entrance interpretation

# Light Rays







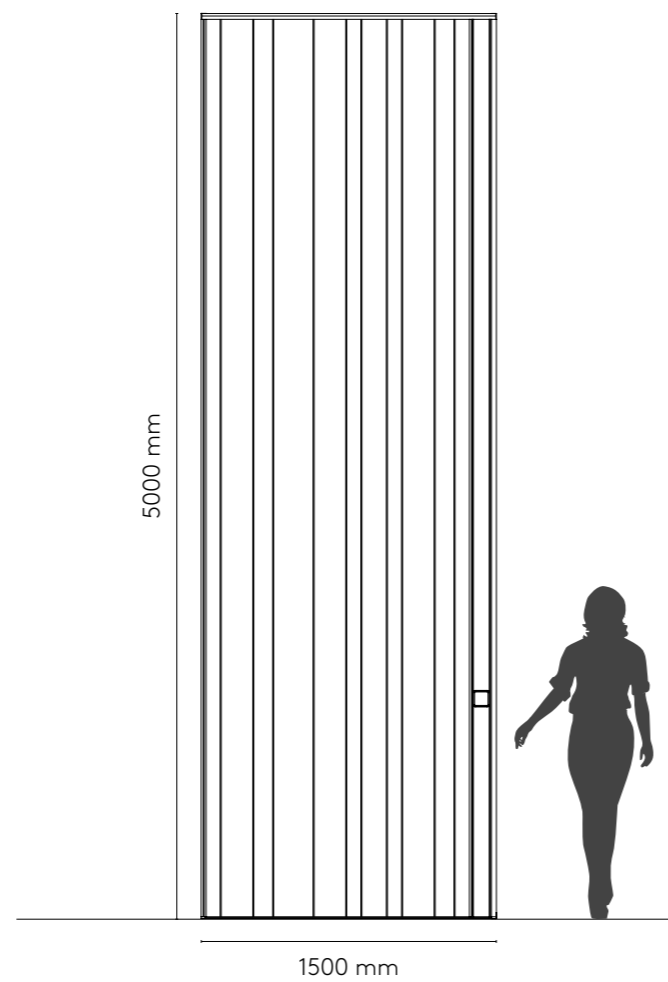
**External**

Line Skydoors Diredtrice  
Finish Oxidized Yellow Gray



**Internal**

Line To drawing  
Finish Leather



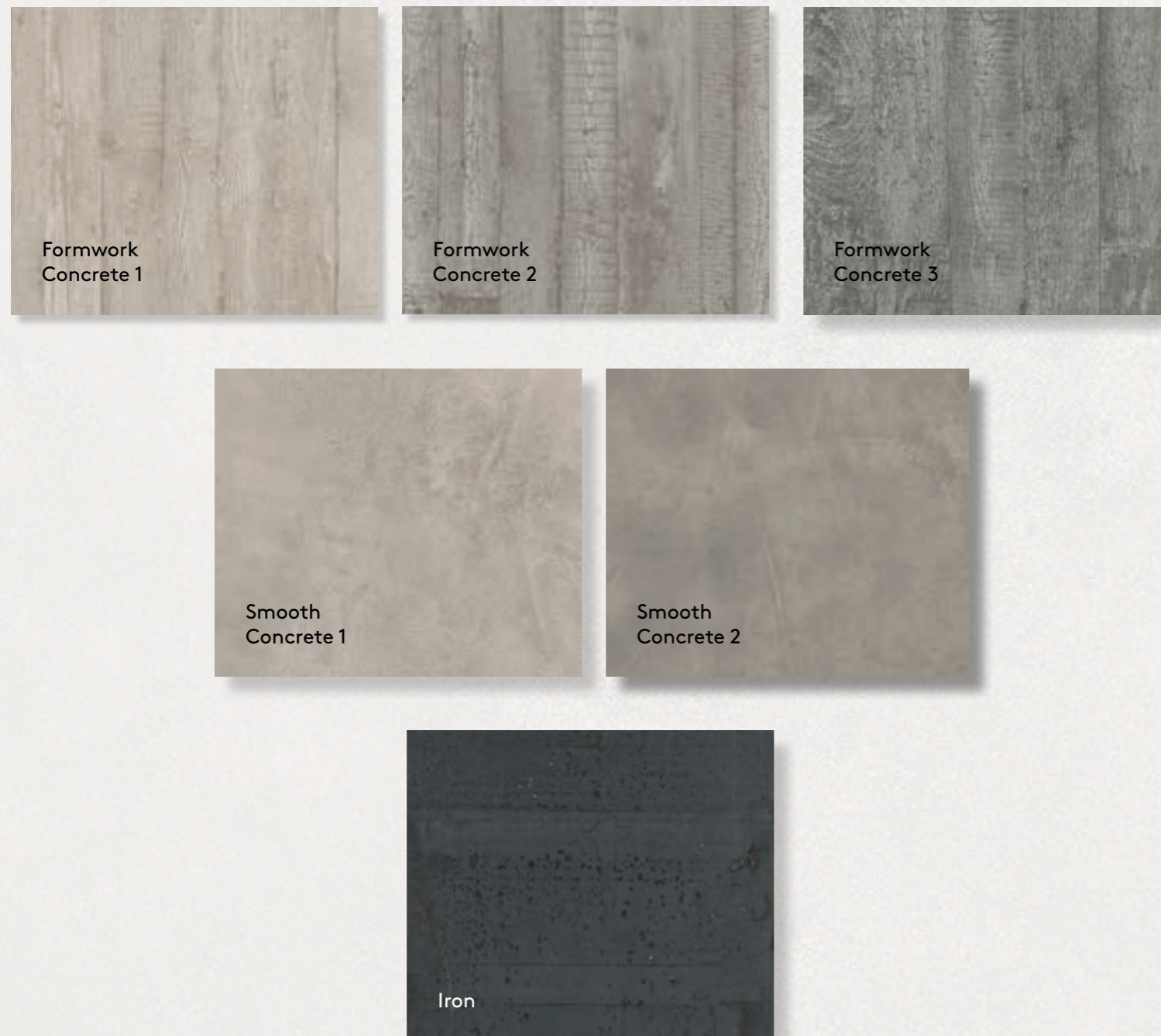






## Finishes and colors

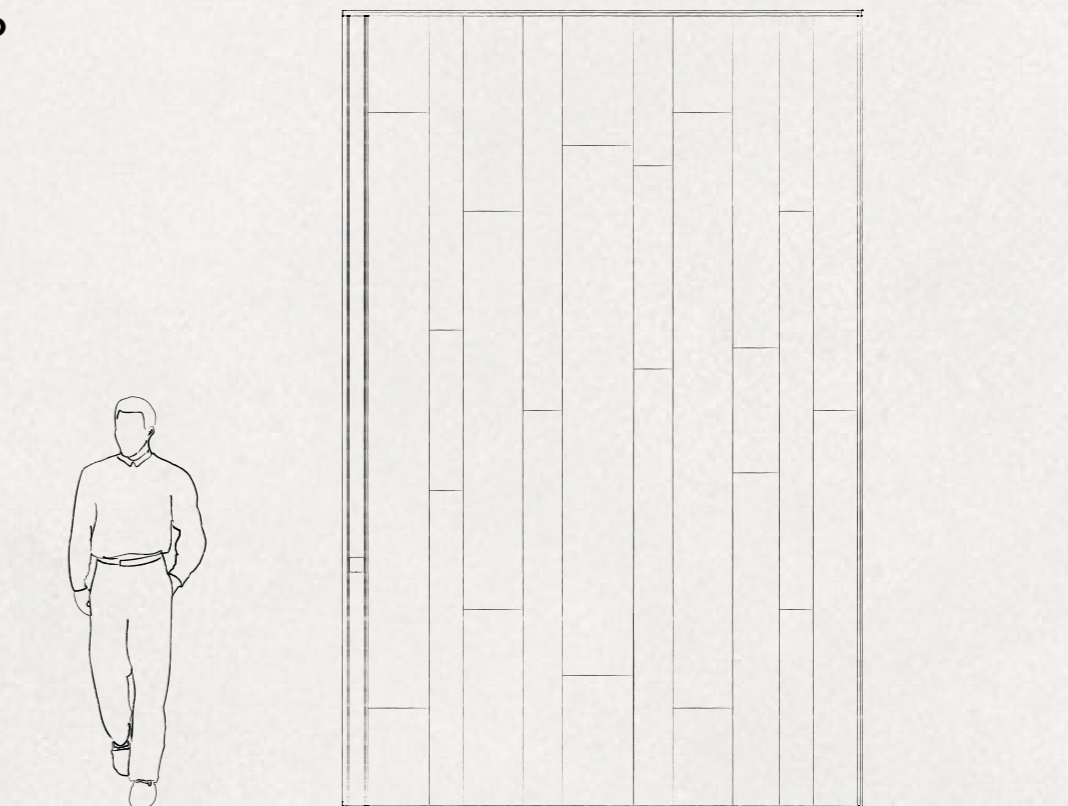
Vela unveils a new range of porcelain gres finishes that combine the elegance of the metallic effect with the urban nature of concrete. From neutral and sophisticated to intense and deep tones, each shade tells a unique textural story.



## The "Tavolato" distinctive sign

Vela characteristic style is also expressed in the introduction of a specifically designed distinctive feature. The **Vertical** and **Horizontal "Tavolato"** line recreates a visual geometry that is harmonious, rhythmic, and evolving.

### Vertical Tavolato Line



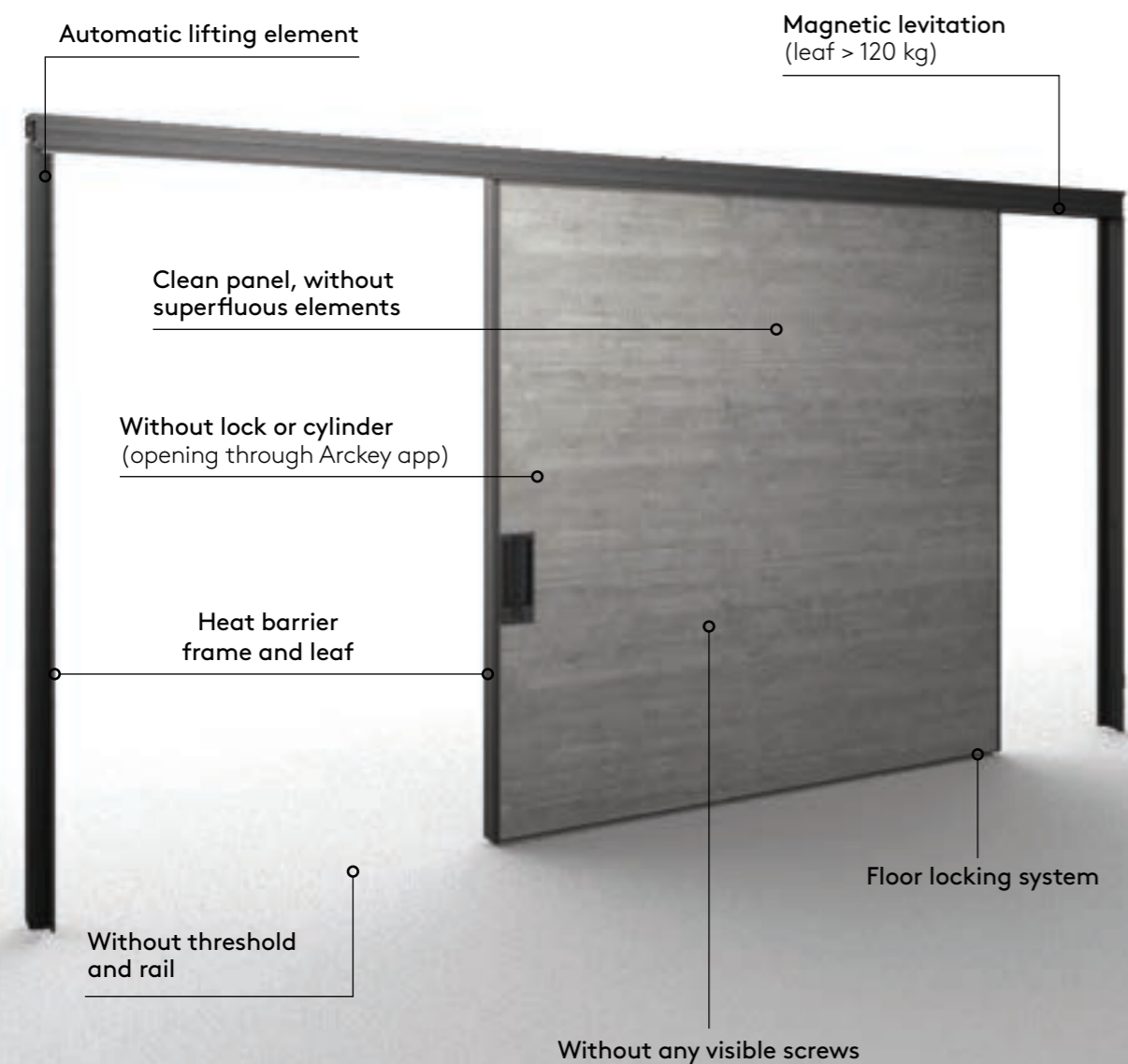
### Horizontal Tavolato Line











## Technical characteristics: the universe is in the details

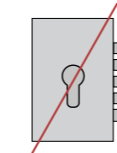
Vela excels in terms of design as well as of technology, providing a home entrance that combines elegance and safety, exceeding all expectations.



The performance, validated by rigorous testing, reaches the top of Oikos already high standards.

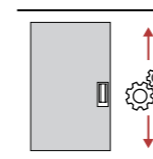
						
Performance	break-in	acoustic	air	water	wind	thermal
Standard supply	Class 4	42 Db	3	7	C5	1,3

## Strengths



### Without lock or cylinder

The innovative choice of removing the usual opening/closing elements increases security since the entrance features no points that can be attacked from outside. In fact, the system is fully electronic, managed by the Arckey app even in remote mode using a smartphone, Oikos card, PIN, or fingerprint reader.



### Automatic lifting element

It is an automation that allows the leaf to raise/lower when the door is opened/closed, making the movement smooth and the spaces more accessible for everyone.



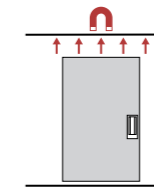
### Heat barrier frame and leaf

Technology that improves the thermal insulation of the door, reducing condensation and heat loss thanks to the insulating materials present in the frame and leaf. All this increases the energy efficiency and living comfort and reduces the heating and cooling costs.



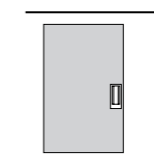
### Without any visible screws

Irreplaceable feature of all Oikos doors. No screws, fastening elements or automation components remain visible thus ensuring an unaltered entrance aesthetic.



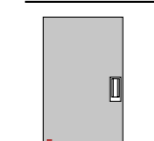
### Magnetic levitation

Ideal for large doors weighing more than 120 kg, the system, which is invisible as it is mounted inside the frame, uses magnetic levitation to raise the leaf, thus reducing friction and allowing a smooth movement.



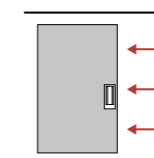
### Without threshold and rail

The door has no threshold and floor rail although it maintains its performance, with no architectural barriers and a clean design that is integrated with its surroundings.



### Floor locking system

The patented and invisible safety mechanism placed in the door leaf for floor closing ensures maximum safety performance of the door without compromising its design.

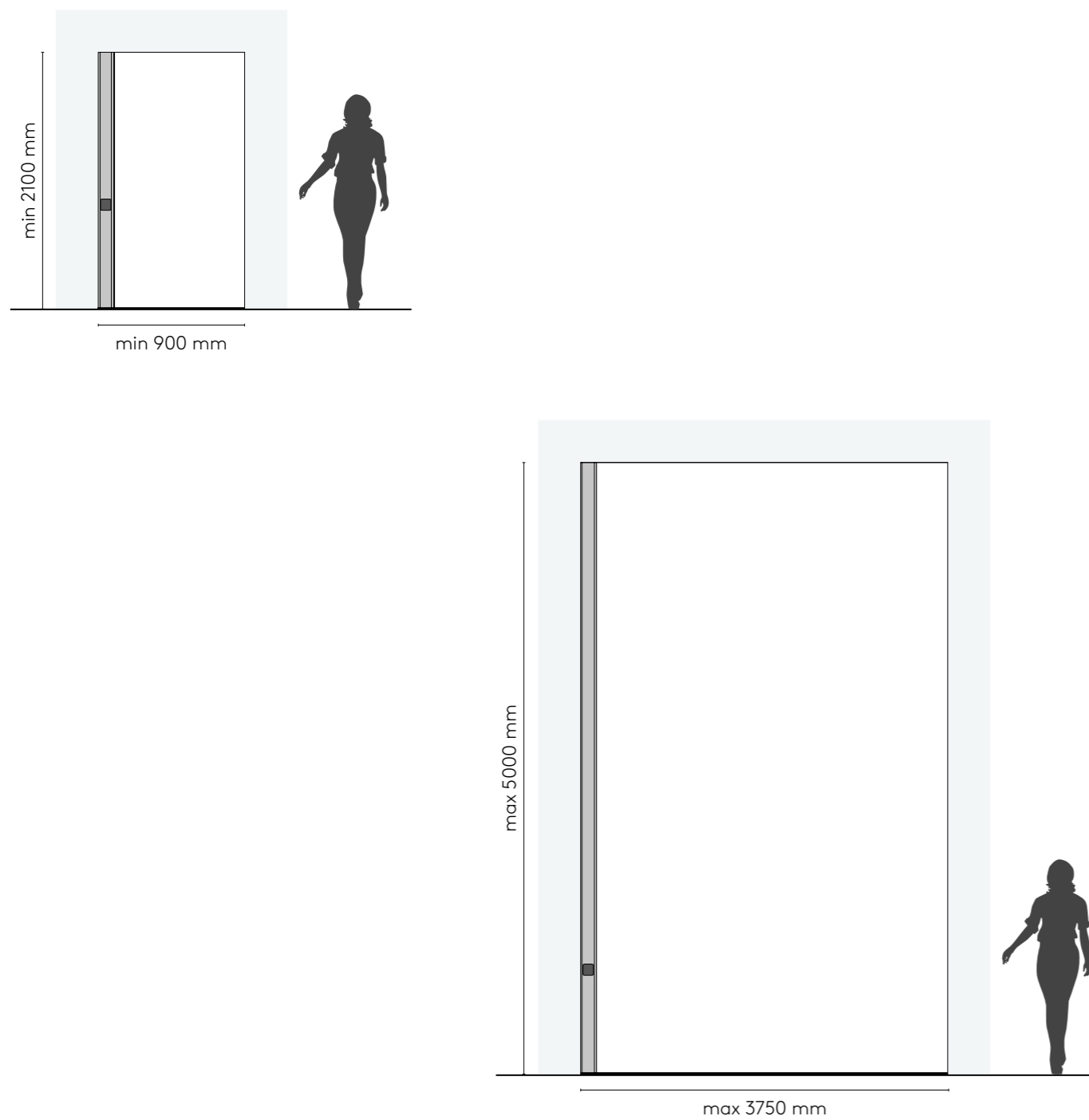


### Motorized sliding movement

It is possible to opt for a fully automatic opening mode that allows the door to rise and open in a consequential manner by pushing a button inside the house.

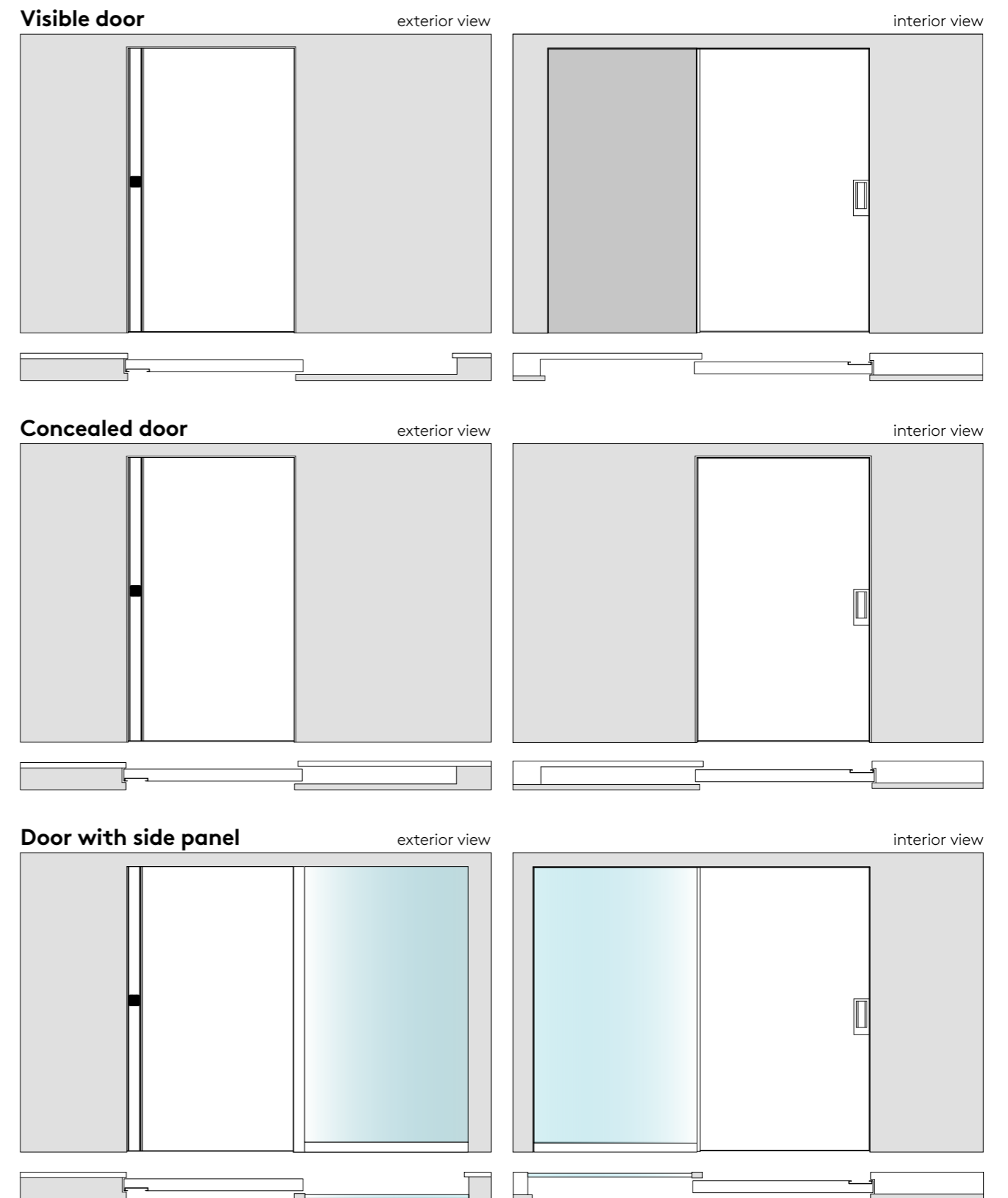
## Size freedom

Vela is the safety front door that offers unprecedented freedom in terms of size, fitting perfectly into any space. The flexibility in size allows for tailor-made solutions, making each entrance unique and special.



## Shapes and sizes

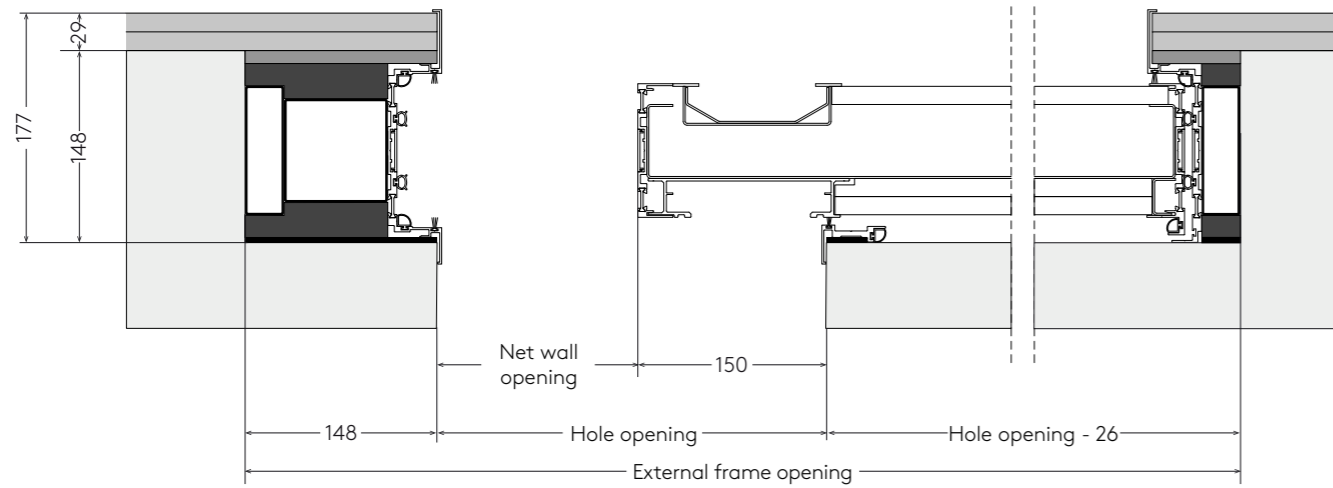
Versatility is an important feature: Vela can disappear elegantly into the wall, creating a perfect continuum between furnishing and entrance, or it can be highlighted by enhancing valuable details and hiding more functional components from view.



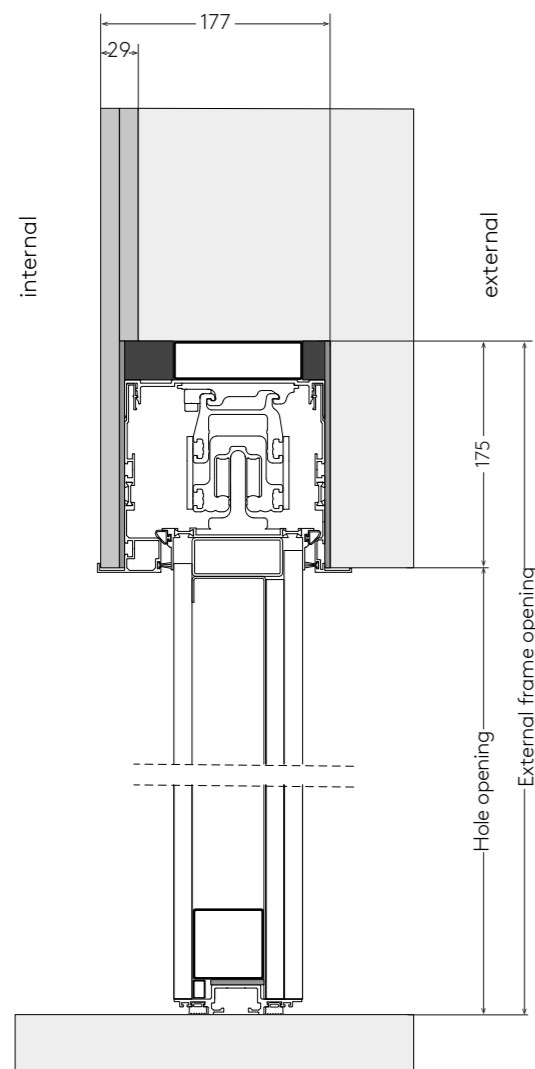
## Technical sections

A first look at the rough dimensions and overall dimensions for introducing Vela into an architectural design.

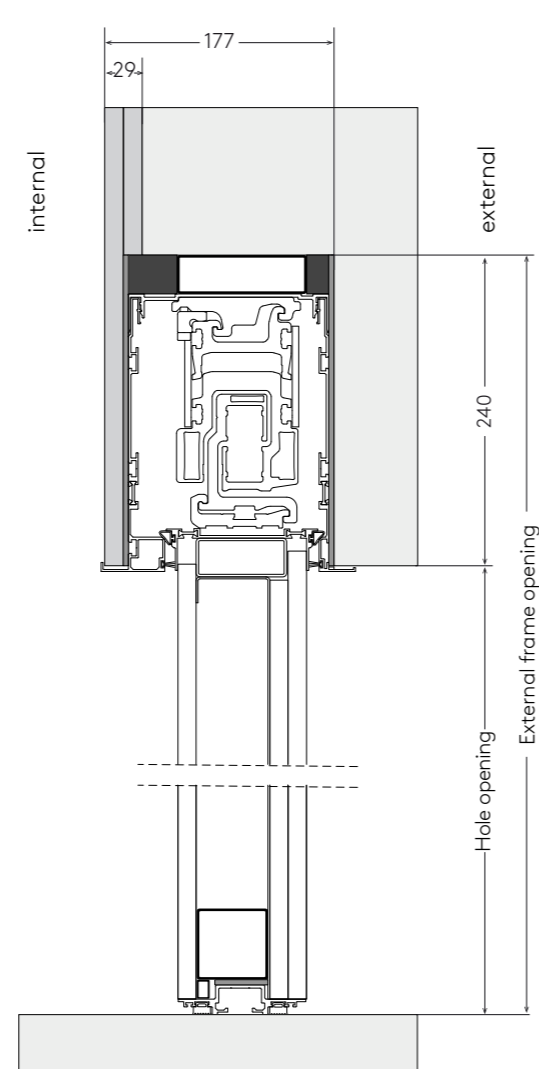
### Horizontal section



### Vertical section

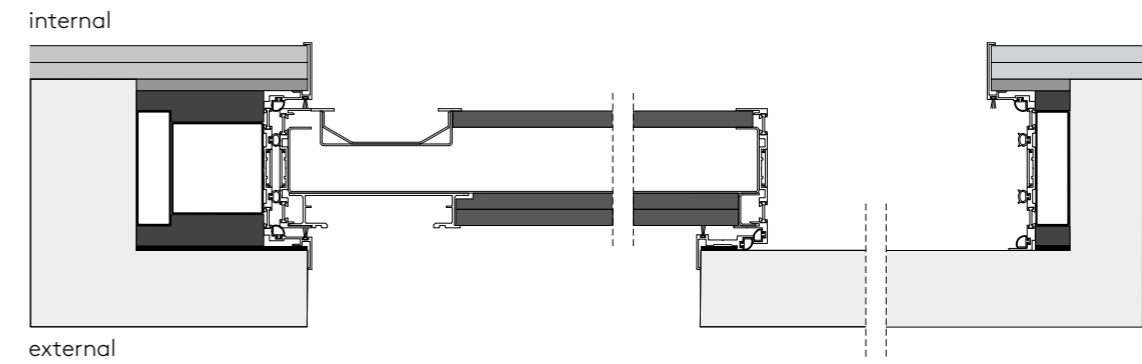


### Magnetic vertical section

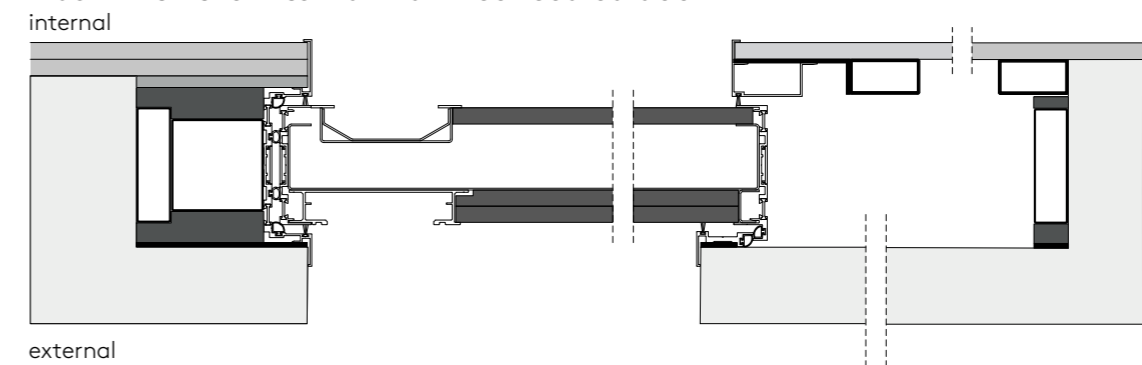


## Fitting solutions

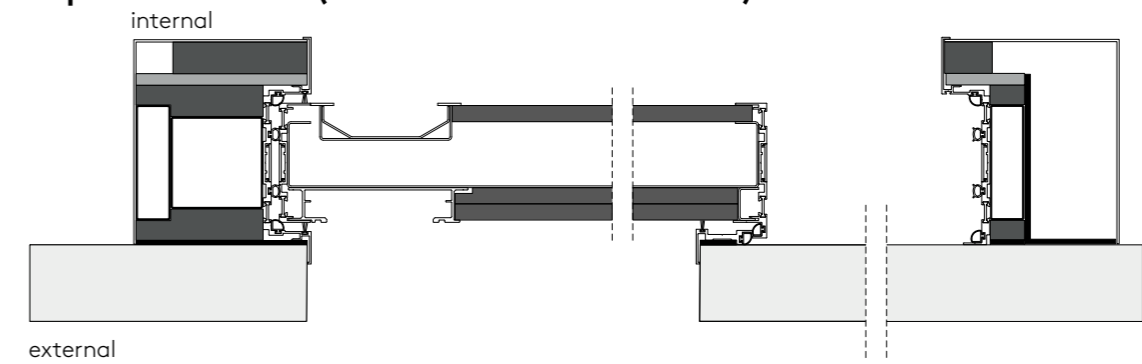
### Flush with the internal wall - visible door



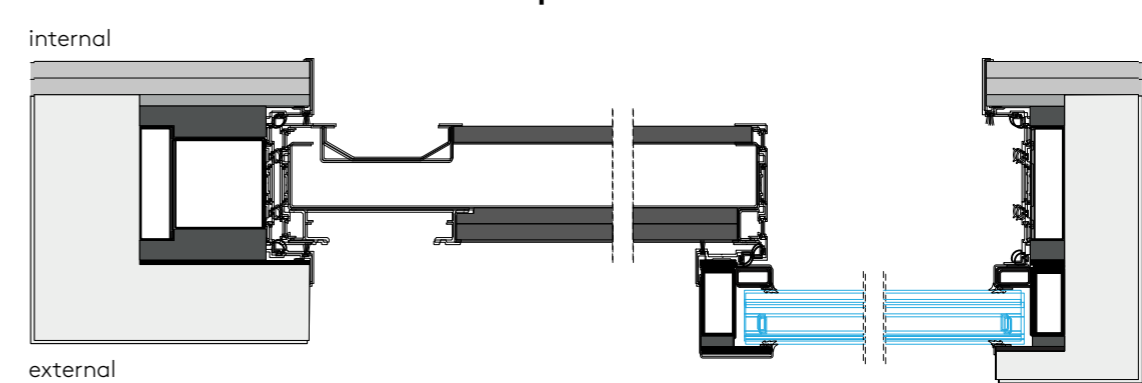
### Flush with the internal wall - concealed door



### Replacement door (flush with the internal wall)



### Flush with internal wall with side panel

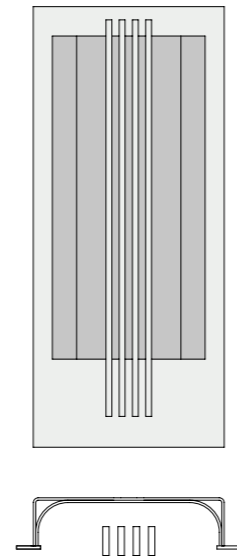
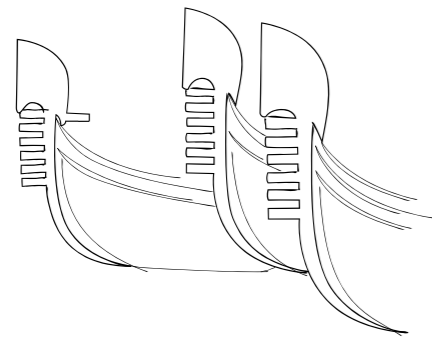


## Style details: the interior handles

Vela's handles are the result of a careful, in-house design study conceived to convey identity and value exclusively to those elements that remain visible.

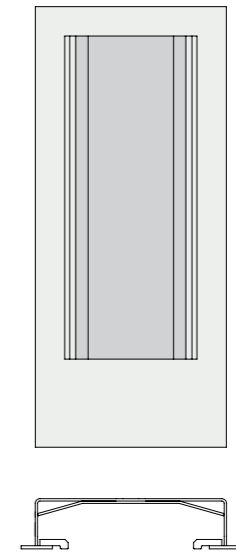
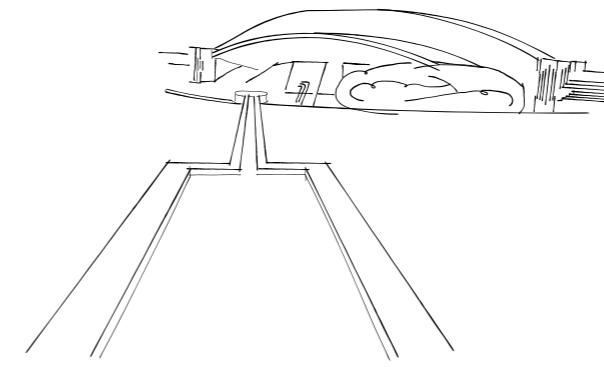
### "Sonia with comb" Handle

The "Sonia with comb" handle features a Venetian flair that celebrates the connection to the territory while conveying the door handle character and sophistication.



### "Sonia" Handle

With a linear and square synthesis featuring Scarpa-style echoes, the "Sonia" handle stands out for its grooves and markings resulting in a minimal yet assertive look.



## Exterior vertical long handle

The Vela vertical long handle can become a protagonist if chosen in the aluminum version, or it can disappear into the entrance architecture if integrated into the door covering.

**Vertical aluminum long handle**

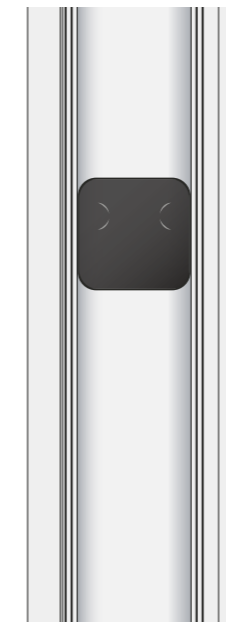


**Vertical long handle coated with the door finish**



## Wireless outdoor opening systems

Vela's opening/closing mechanism is operated by a smart keypad that can be inserted into the vertical long handle, the wall next to the entrance, or even in another room. Wherever you want, an innovative access control solution that can be easily installed and requires no wiring while integrating seamlessly with the context design.



Smartphone and Oikos card



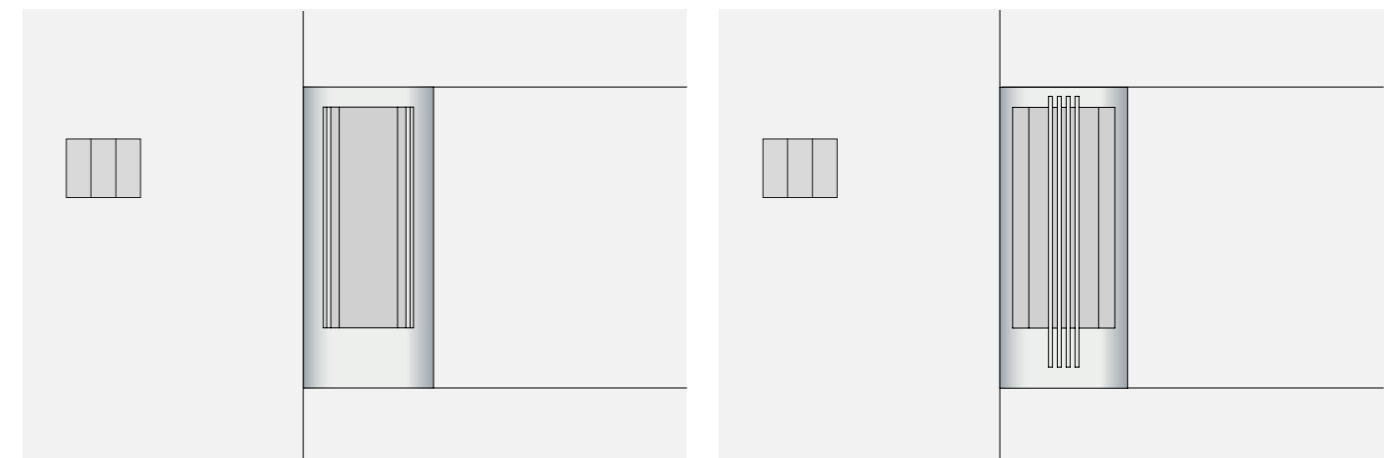
Smartphone, Oikos card and PIN



Smartphone, Oikos card, PIN, and fingerprint reader

## Internal opening system

The door is opened from the inside by pressing a button located near the handle.



**Dedicated to those who, instead of following already  
traced paths, create new ones never imagined before.**





**Vela**  
everything *flows*



Oikos Venezia srl - Via della Tecnica 6, 30020 Gruaro (Ve) - Italy  
T. (+39) 0421 7671 F. (+39) 0421 767222  
[oikos@oikos.it](mailto:oikos@oikos.it) [www.oikos.it](http://www.oikos.it)